



THE RESIDENCES
AT THE CARLISLE PALM BEACH



For those who prefer a
**CERTAIN TYPE OF
LIFESTYLE.**



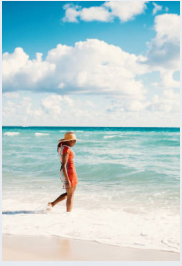
An uncompromised approach to RELAXED LUXURY.

Palm Beach. An island, a town, and a destination for those seeking a particular style of easygoing elegance for over a century. Where the finer things abound but are only, when necessary, formal. A special place where life's rhythms sync with the ocean tides, ebbing and flowing yet never rushing. Where life is always exactly as it should be, and always a bit more rewarding than expected.

In other words, the perfect backdrop for The Residences at The Carlisle Palm Beach.

Created to capture the quintessence of Palm Beach, The Residences affords an elevated experience in every aspect of daily living. A singular expression of relaxation, rejuvenation, and celebration for those who have always believed their best life is yet to come.





A setting that SETS THE STANDARD.

Imagine it. The cool calmness of sunrise yielding to warm, ocean breezes. The intoxicating elixir of sweetly salty air. A place where every experience is worthy of anticipation, yet nothing is rushed. Where expectations are rarely uttered but always addressed. And where each night ends with a whisper and promise of more to come.

That is Palm Beach. Home to an appreciative few.
Perhaps someday soon, including you.







A home like NO OTHER.

Conceived with an eye toward functional luxury in both design and detail, the four floor plans on offer at The Residences provide the perfect combination of comfort and inspiration. Each tastefully appointed with superior materials. Each a canvas waiting for your personal touch. Each a truly worthy space to call your home.

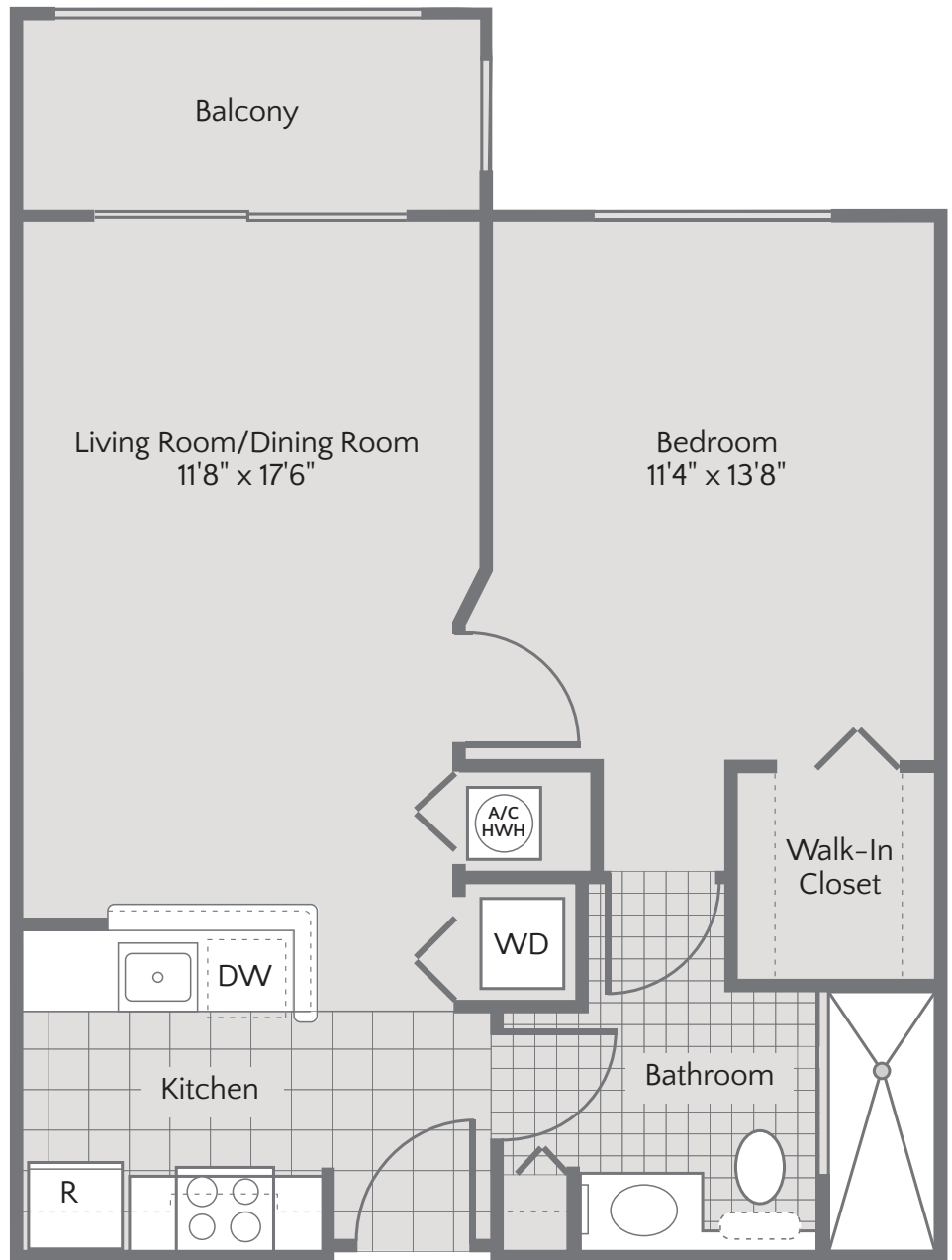
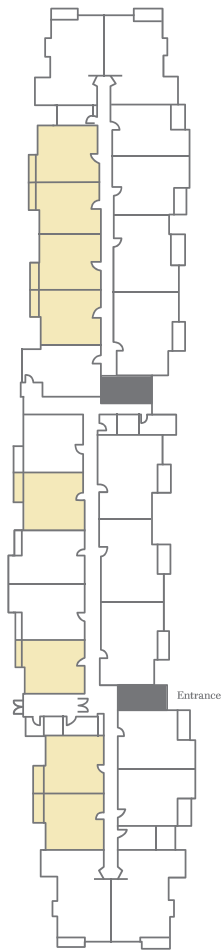
A selection of in-residence amenities includes:

- Stunning ocean, intercoastal, nature preserve, or courtyard pool views
- Granite countertops with tile backsplashes
- Full kitchen featuring stainless steel appliances
- Built-in microwave and dishwasher
- Central air conditioning and heat with independent controls
- Mix of lush carpet, scratch-resistant wood laminate or tile floor options
- Full-sized washer and dryer
- Walk-in closets with ample space
- Full-sized bathrooms
- Additional half-bathroom in some floor plans
- Private balconies
- Weekly housekeeping service
- Extra storage available on-site
- Most utilities included

WORTH AVENUE

1 BEDROOM
1 BATH
BALCONY

640 SF



To tour an available residence call (561) 593-3408.

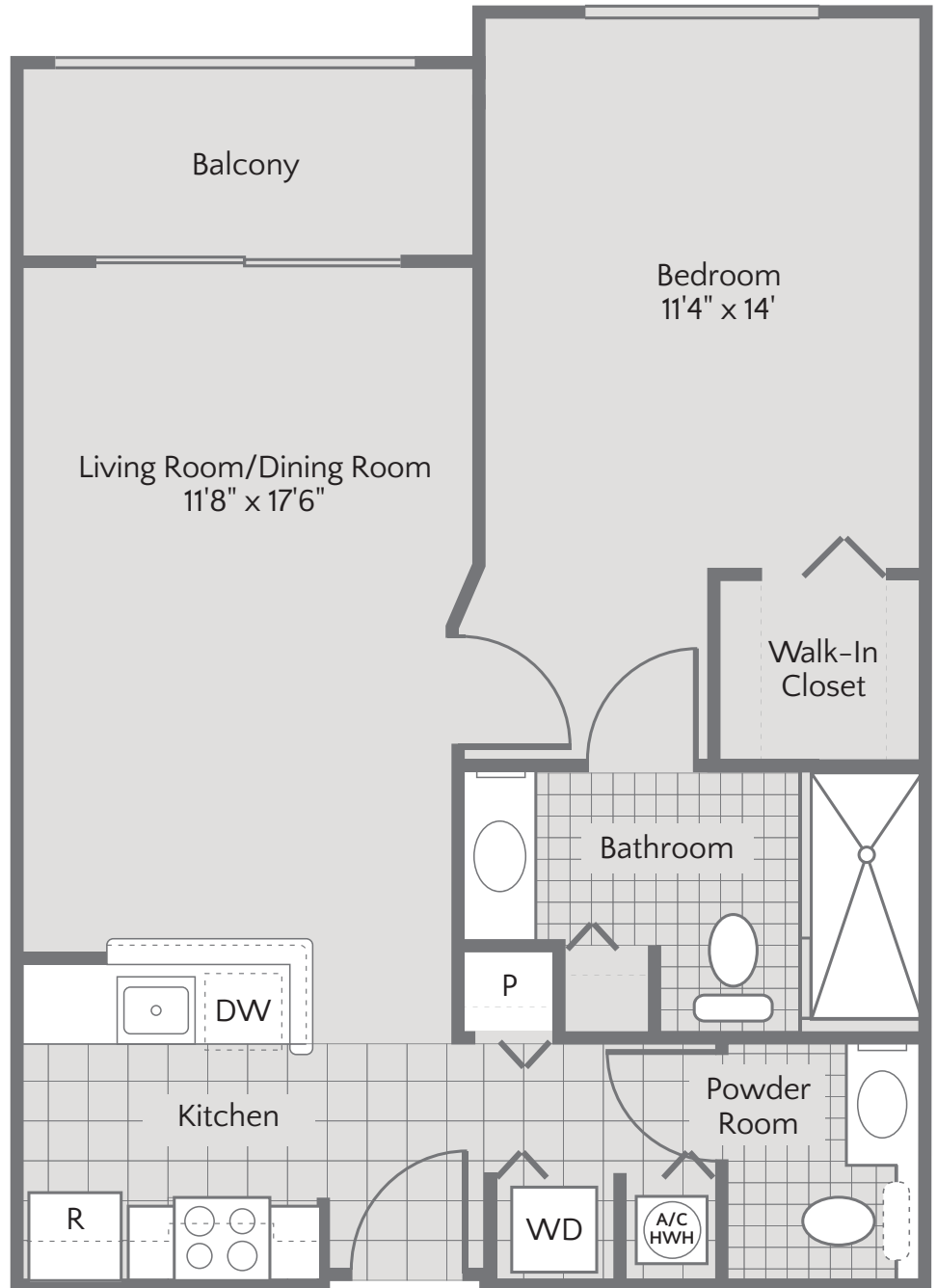
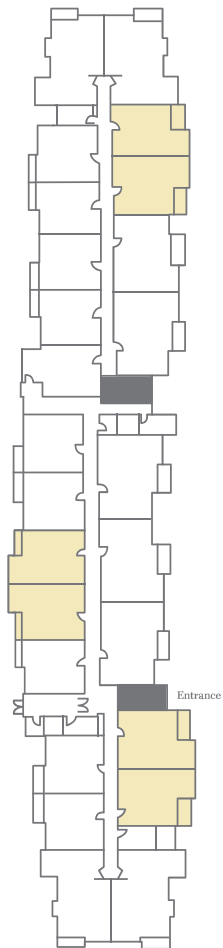


Floorplans are artist's rendering. All dimensions are approximate. Actual product and specifications may vary in dimension or detail. Not all features are available in every apartment. Prices and availability are subject to change. Please see a representative for details.

LANTANA

1 BEDROOM
1.5 BATH
BALCONY

714 SF



To tour an available residence call (561) 593-3408.

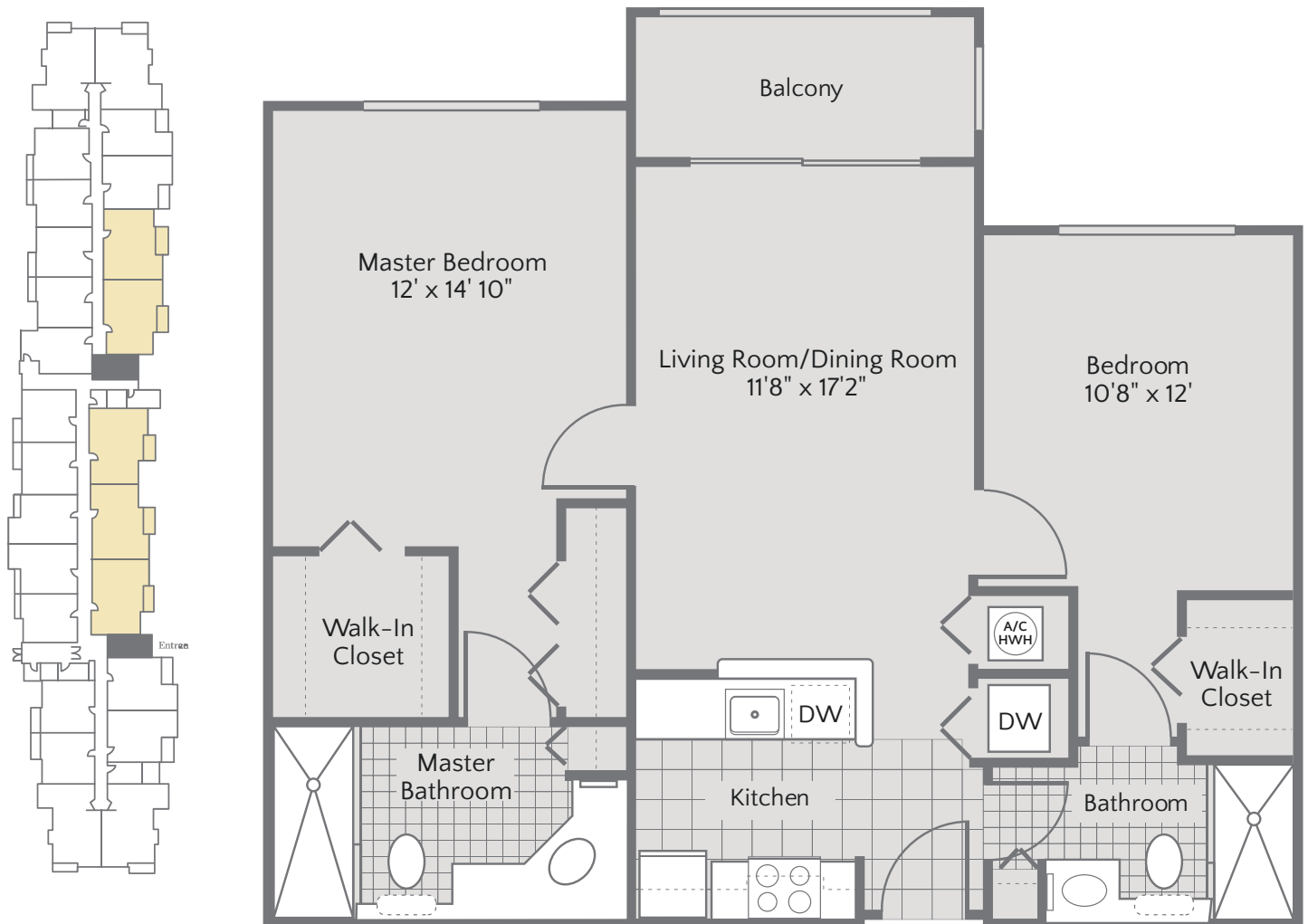


Floorplans are artist's rendering. All dimensions are approximate. Actual product and specifications may vary in dimension or detail. Not all features are available in every apartment. Prices and availability are subject to change. Please see a representative for details.

THE ATLANTIC

2 BEDROOM
2 BATH
BALCONY

943 SF



To tour an available residence call (561) 593-3408.

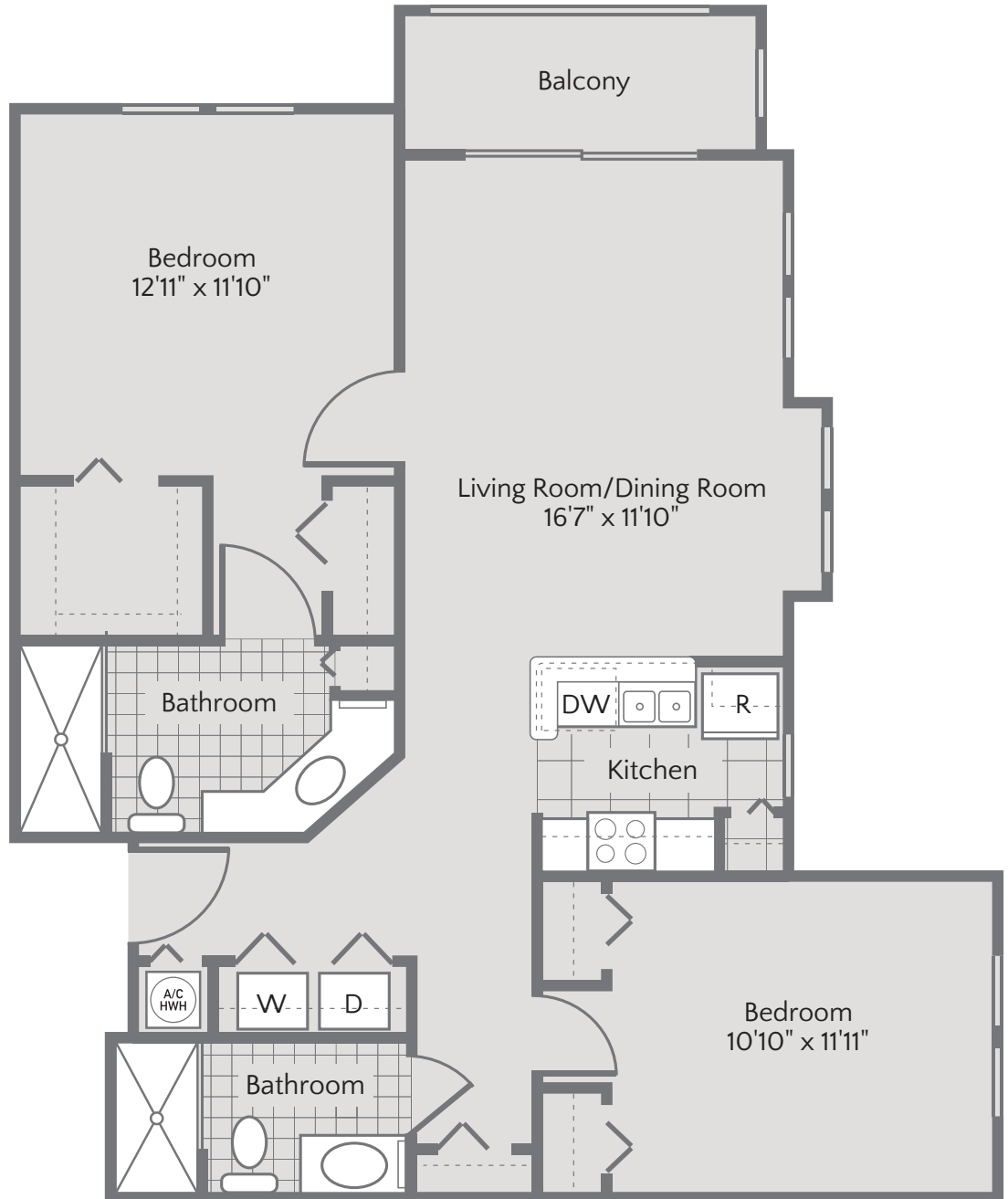
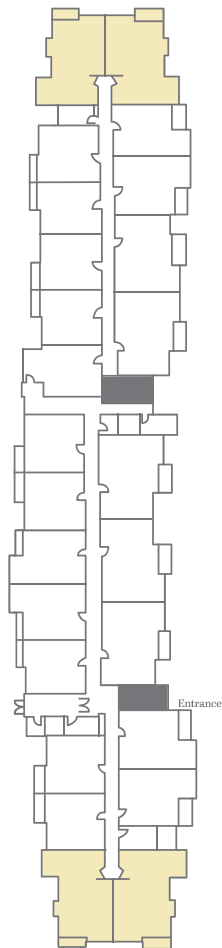


Floorplans are artist's rendering. All dimensions are approximate. Actual product and specifications may vary in dimension or detail. Not all features are available in every apartment. Prices and availability are subject to change. Please see a representative for details.

OCEAN AVENUE

2 BEDROOM
2 BATH
BALCONY

1018 SF



To tour an available residence call (561) 593-3408.



Floorplans are artist's rendering. All dimensions are approximate. Actual product and specifications may vary in dimension or detail. Not all features are available in every apartment. Prices and availability are subject to change. Please see a representative for details.

The exceptional IS NOW THE RULE.

A mere collection of apartments does not a luxury community make. Naturally, The Residences bypasses the ordinary to focus on providing an extraordinary lifestyle day upon day upon day. Every amenity has been carefully considered and exceptionally executed so that even the simplest of things acquire a new level of satisfaction. After all, we are not attempting to meet our own standards. We are driven to exceed yours.





An endless feast for both **BODY AND SOUL.**

At The Residences at The Carlisle Palm Beach, even the quickest of bites is taken as an opportunity to delight. With in-community eateries, each featuring a rotating menu curated by our own Executive Chef, you will always find something perfectly suited to your tastes and timelines.

Ocean 450

When a desire for laidback luxury is in the offing, Ocean 450 delivers with à la carte breakfast fare and a rotating dinner menu featuring flavorful creations highlighting both land and sea.

Ocean Edge

A casual bistro inspired by the local character, Ocean Edge delights the palate with an ever-evolving menu of fresh flavors and fast bites, including pastries and coffee in the morning and crisp salads and hot-pressed sandwiches for lunch, among other temptations.

Private Dining

For the ultimate intimate dining experience, our Private Dining Room offers the perfect opportunity to enjoy special evenings with friends and family with a curated menu created by our Chef with your direct input.



Something exquisite AROUND EVERY CORNER.

The Residences at The Carlisle Palm Beach exists to place the finest aspects of luxury living in as close proximity as possible. One is never more than a few footsteps away from a quiet nook, a pampering experience, or a lively discussion with friends.

Courtyard & Pool

Relax among the lush, palm-strewn paths of the courtyard while considering a dip in our pool or a short soak in the Jacuzzi.

Gathering Spots

Enjoy time with friends or some well-deserved personal time at an assortment of spaces crafted to inspire and invigorate, including the rotunda lounge for all things social, the cinema for movies and more, and the art studio where your inner Picasso or Pollock can shine.

Wellness

Embrace the mind-body connection of holistic fitness at The Wellness Hub, a recently completed addition to The Residences. Featuring state-of-the-art equipment, group and private classes, and available physical therapy through our on-site partners, The Wellness Hub will help keep the whole you feeling refreshed and ready for more. For a less aerobic recharge, the salon & spa provides a full complement of services, including hair styling, manicures/pedicures, and massages.

Palm Beach & The Oceanside Corridor

Tucked between the Intracoastal and Atlantic Ocean, The Residences offers walkable access to the best that Palm Beach has to offer, along with other south Florida favorites that are but a short drive away. For nature lovers, the Lantana Nature Preserve provides several acres of undisturbed beauty – and just happens to be right next door.

The Carlisle Assisted Living & Memory Care

Maintaining close relationships with parents, siblings, and friends is paramount to a healthy life. For those in your life who could benefit from a higher level of care, The Carlisle Assisted Living & Memory Care borders The Residences, so you can continue spending quality time with those who matter most.



A brief note ABOUT FINANCIAL MATTERS.

At The Residences at The Carlisle Palm Beach, we pride ourselves in providing a level of luxury living that exceeds the financial outlay required of our residents.

To wit, ours is an all-inclusive community. You never need wonder if what you wish to enjoy is something you're permitted to engage in.

Similarly, we eschew common industry practices such as exorbitant buy-in fees or punitive leases. We prefer the resident-friendly rental model accompanied by complete transparency vis-à-vis costs.

Ultimately, we do these things because we believe clarity about financial matters engenders peace of mind – which is itself a luxury. Also, it is simply the right thing to do.





At your SERVICE.

We hope you have found this brief introduction to The Residences at The Carlisle Palm Beach equal parts illuminating and intriguing. While we have worked tirelessly to bring The Residences to fruition, we firmly believe that effort is of little merit without results.

To that end, we cordially invite you visit The Residences and witness those for yourself. While there is much to see, much to learn, and much to (pardon our boldness) appreciate, we suspect it will require little more than an instant to recognize that life at The Residences would suit you quite well.

Of course, if you are unable because of distance or schedule to make your first visit in person, we would be honored to give you a guided virtual tour via video conference.

**To schedule a tour of your choosing,
or to inquire about matters not addressed
in this piece, please call directly at
(561) 532-2088.**

**We look forward to speaking with you in the
coming days.**

**Best wishes,
The Residences Team**

**The Residences at The Carlisle Palm Beach
450 E. Ocean Avenue
Lantana, FL 33462**

carlisleresidences.com



The Residences at The Carlisle Palm Beach
450 E. Ocean Avenue
Lantana, FL 33462